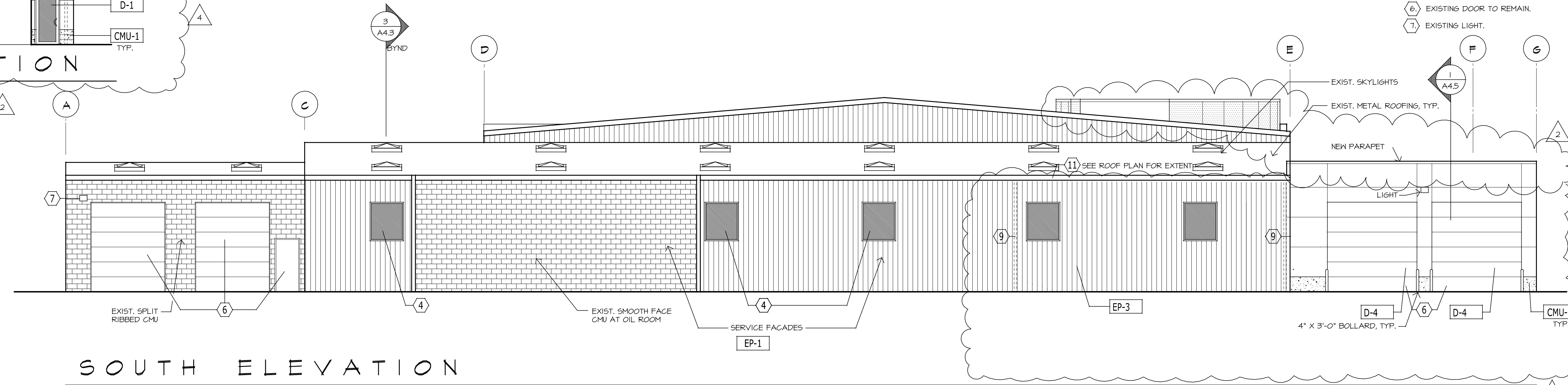
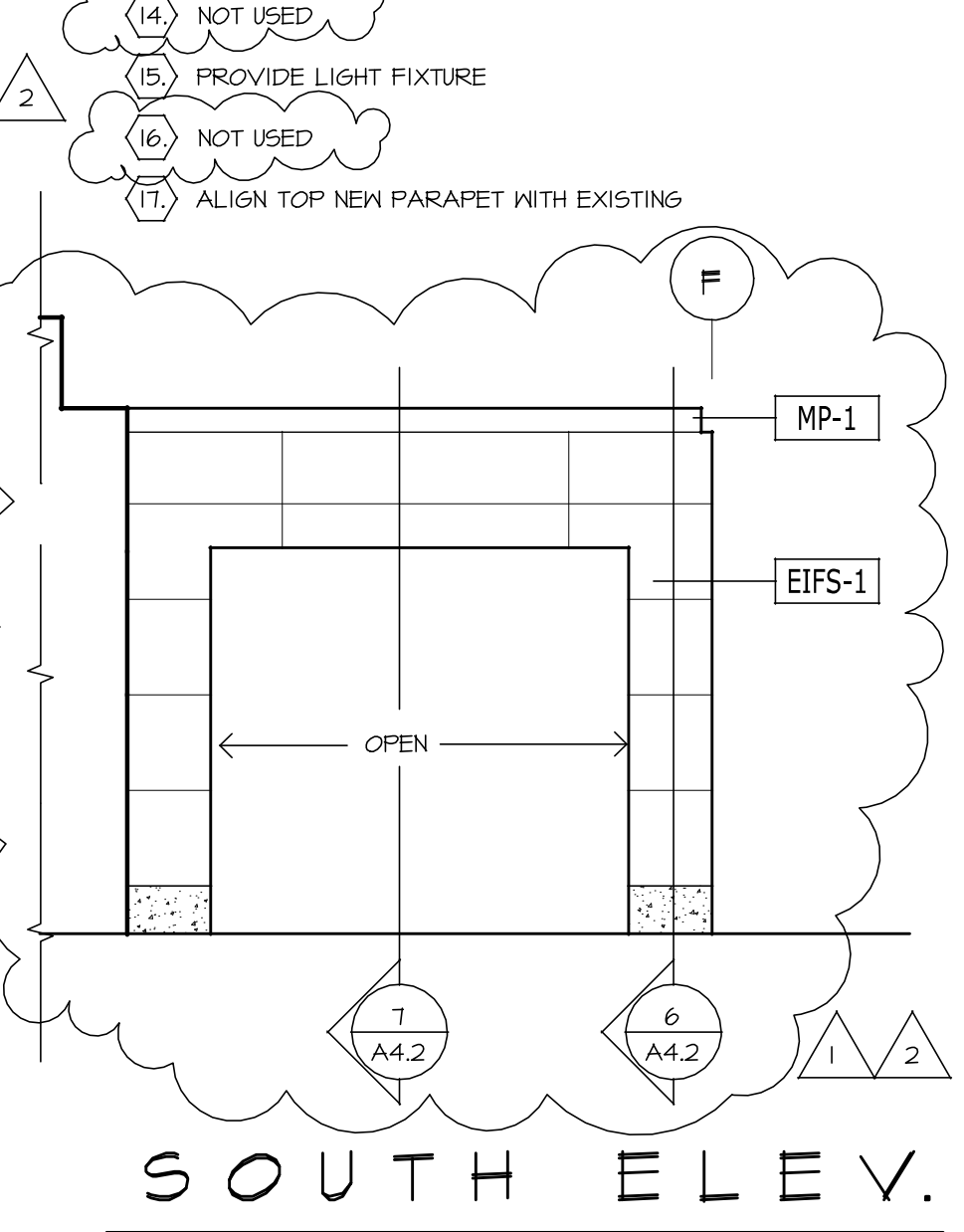


SOUTH ELEV.
(PARTIAL @ OFFICE 104B)



SOUTH ELEVATION



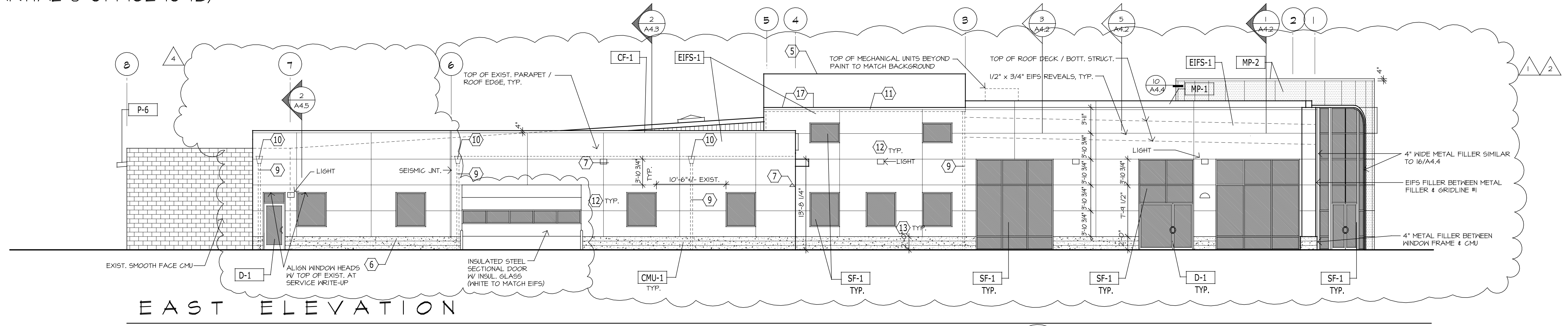
SOUTH ELEV.
(PARTIAL)

LEGEND

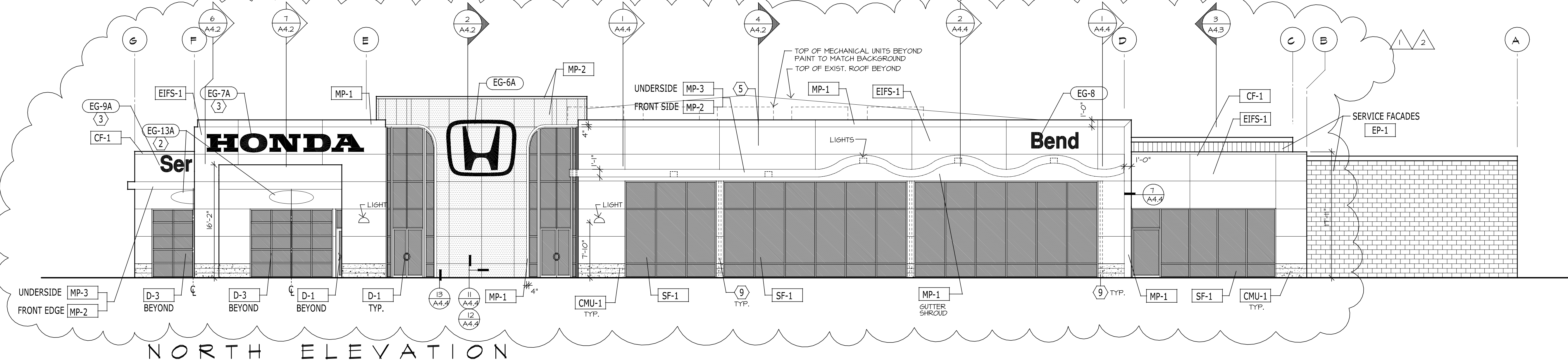
○	NOTE DESIGNATOR - REFER TO DRAWING NOTES ON THIS SHEET
G-7	GRAPHICS DESIGNATOR - FOR OWNER FURNISHED SIGNAGE
X-7	FINISH DESIGNATOR - REFER TO FINISH LEGEND

- GENERAL NOTES**
- ELEVATIONS NOT SHOWN SHALL RECEIVE SAME OR COMPLEMENTARY FINISHES TO MATERIALS SHOWN BELOW.
 - NEW EIFS EXTERIOR SIDING TO BE SCORED IN 4'X2' PATTERN THIS 4'-0" WHEN NOT GRAPHICALLY SHOWN.
 - IF STUCCO ALTERNATE IS SELECTED BY OWNER, PROVIDE EXTRUDED 3/4" X 3/4" (FRY OR APPROVED) ALUMINUM REVEALS TO MATCH EIFS SCORING PATTERN. COLOR TO MATCH STUCCO.

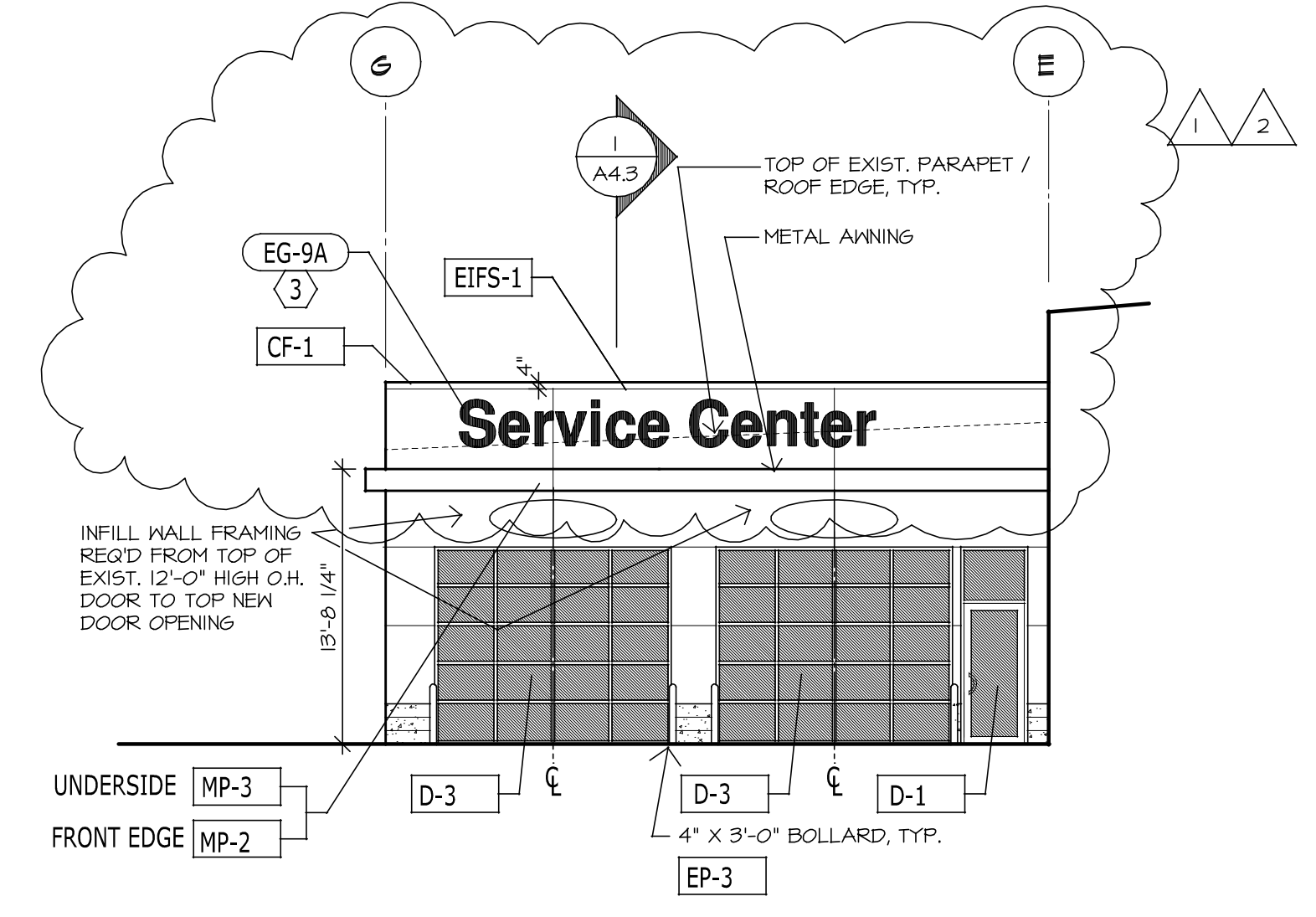
- KEYED NOTES**
- EXIST. WINDOWS W/ DARK BRONZE FRAMES TO BE PAINTED METALLIC SILVER TO MATCH NEW CLEAR ANODIZED ALUMINUM STOREFRONT.
 - SIGNAGE OCCURS AT CENTER OF OVERHEAD DOORS AND CENTERED BETWEEN TOP OF DOOR AND BOTTOM OF CANOPY.
 - SIGNAGE CENTERED ON WALL.
 - EXISTING WINDOW TO REMAIN.
 - EXISTING ROOF TO REMAIN.
 - EXISTING DOOR TO REMAIN.
 - EXISTING LIGHT.
 - NOT USED.
 - DOWNSPOUT, MATCH BACKGROUND COLOR.
 - CONDUCTOR HEAD, MATCH BACKGROUND COLOR.
 - GUTTER, MATCH BACKGROUND COLOR.
 - REMOVE EXIST. METAL SIDING AS REQ'D FOR EIFS FINISH.
 - REMOVE EXIST. CMU MAINSCOT AS REQ'D FOR EIFS FINISH.
 - NOT USED.
 - NOT USED.
 - PROVIDE LIGHT FIXTURE.
 - NOT USED.
 - ALIGN TOP NEW PARAPET WITH EXISTING.



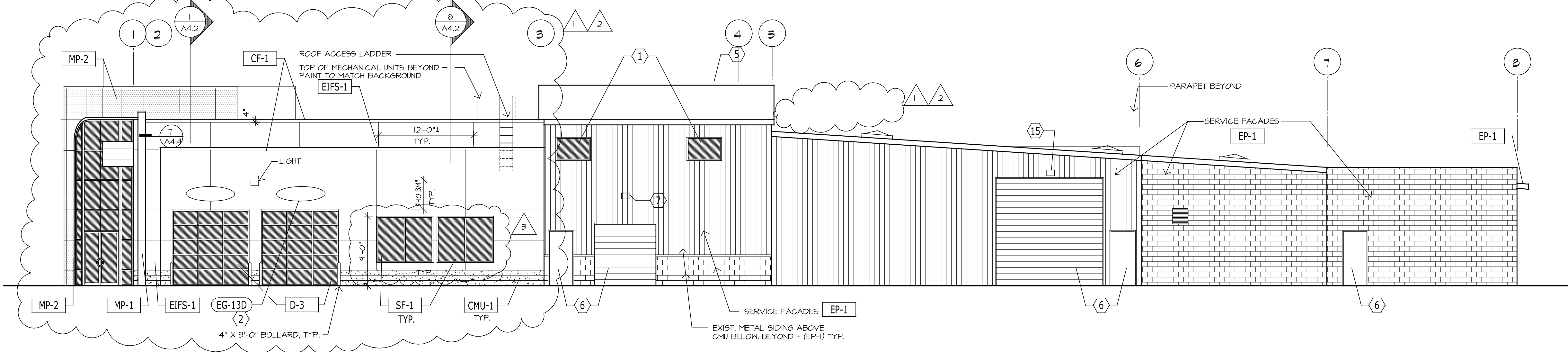
EAST ELEVATION



NORTH ELEVATION



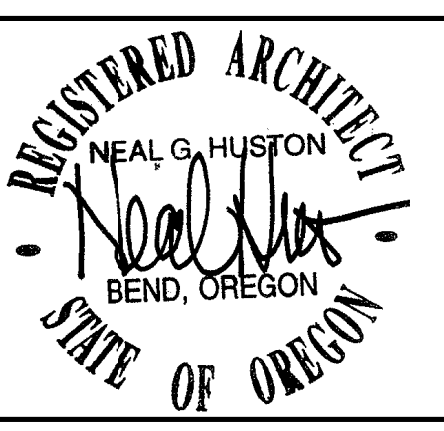
NORTH ELEV.
(PARTIAL)



WEST ELEVATION

FINISH LEGEND

CODE	MANUFACTURER / DESCRIPTION
CF-1	METAL PARAPET CAP FLASHING MANUFACTURER: TBS COLOR: TO MATCH MP-1 (HONDA SILVER METALLIC) DIMENSION: 4" HEIGHT
CMU-1	CONCRETE MASONRY UNIT MANUFACTURER: HILLARLETTE GRAYSTONE COLOR: "GRANITE" FINISH: SPLIT FACE
D-1	GLASS & ALUMINUM DOOR MANUFACTURER: KAWNEER OR APPROVED SERIES: 8070 OR 5070 MEDIUM STYLE COLOR: TO MATCH SF-1
D-2	HOLLOW METAL DOOR MANUFACTURER: TBS SERIES: 3070 INTEGRAL VISION PANEL COLOR: GLIDDEN PROFESSIONAL 800Y 85/024 NATURAL WHITE - SEE EP-1
D-3	ALUMINUM OVERHEAD DOOR (GLASS) MANUFACTURER: TBS COLOR: METAL COLOR TO MATCH SF-1 (CLEAR ANODIZED)
D-4	ALUMINUM OVERHEAD DOOR (PAINTED METAL) MANUFACTURER: EXISTING COLOR: GLIDDEN PROFESSIONAL 800Y 85/024 NATURAL WHITE - SEE EP-1
EIFS-1	EXTERIOR INSULATION & FINISH SYSTEM MANUFACTURER: DRYVIT COLOR: HONDA CANVA WHITE HOND061021 LOCATION: EXTERIOR WALLS, FINISH: SANDBLAST
EP-1	PAINT MANUFACTURER: GLIDDEN PROFESSIONAL COLOR: 801Y 85/024 NATURAL WHITE, SEMI-GLOSS FINISH
EP-2	PAINT MANUFACTURER: GLIDDEN PROFESSIONAL COLOR: 801Y 85/024 NATURAL WHITE, SATIN FINISH
EP-3	PAINT MANUFACTURER: GLIDDEN PROFESSIONAL COLOR: MATCH "HONDA BLUE", SEMI-GLOSS ENAMEL
MP-1	METAL PANEL SYSTEM MANUFACTURER: ALPOLIC OR REYNOLBOND COLOR: HONDA SILVER METALLIC, 4MM P/N B5X (ALPOLIC)
MP-2	METAL PANEL SYSTEM MANUFACTURER: ALPOLIC OR REYNOLBOND COLOR: HONDA BLUE, 4MM P/N HNB (ALPOLIC)
MP-3	METAL PANEL SYSTEM MANUFACTURER: ALPOLIC OR REYNOLBOND COLOR: HONDA WHITE, 4MM P/N BWT (ALPOLIC)
SF-1	ALUMINUM STOREFRONT MANUFACTURER: KAWNEER OR APPROVED COLOR: CLEAR ANODIZED



EXPANSION & REMODEL FOR...
LITHIA HONDA OF BEND
2225 NE HIGHWAY 20
BEND, OREGON

NEAL HUSTON
& ASSOCIATES
ARCHITECTS INC.



520 SW Powerhouse Dr.
Suite 821
Bend, Oregon 97702
541.389.0991
FAX 541.389.1344
info@nealhuston.com
www.nealhuston.com

Copyright © 2012 by Neal Huston & Associates Architects Inc.

REVISIONS

DATE	DESCRIPTION
1 4/02/13	MOD. OF APPROVAL
2 4/26/13	CITY CORRECTIONS
3 1/05/13	CONF. TRAINING RM.
4 8/27/13	EXPRESS SERV. ADDTN.
5	
6	

DRAWINGS
EXTERIOR ELEVATIONS

PROJECT #: 1116
CAD FILE: 1116ex15
SCALE: 1/8" = 1'-0"
DATE: 11/16/2012
DRAWN BY: CK

CONSTRUCTION SET:
06/11/13

A4.1